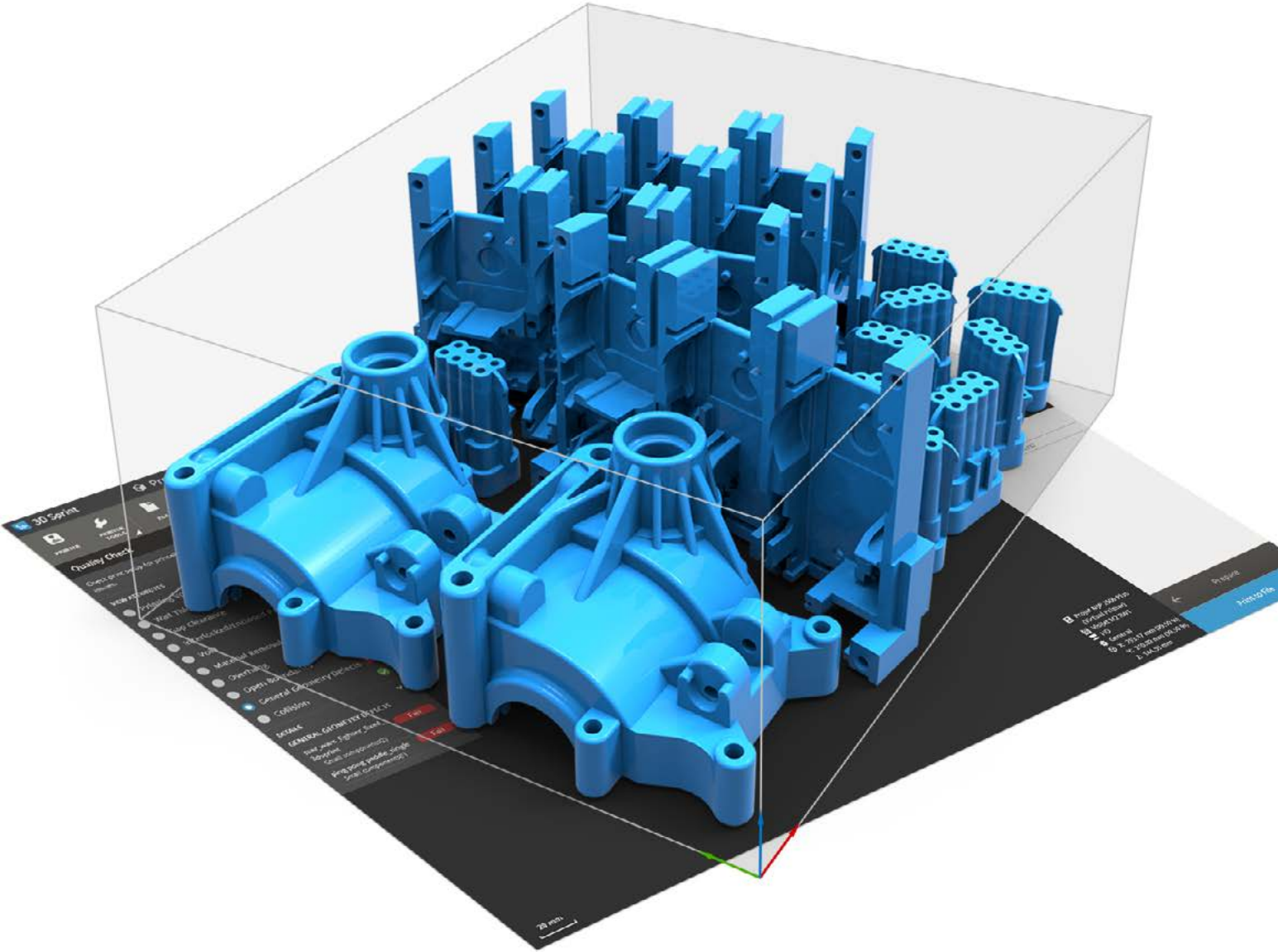


Sp 3D Sprint™

Setting the New Standard in 3D Printing





3D Sprint™

Experience true productivity with exclusive additive manufacturing software for 3D Systems Plastic Printers

3D Sprint™ is 3D Systems' exclusive software for preparing and optimizing CAD & polygon data, and managing the additive manufacturing process on its plastic 3D printers. Shipping with each supported 3D Systems printer, 3D Sprint delivers tools that allow you to 3D print better parts without needing high-priced software to achieve it.

Successful 3D Printing is Now Available to Everyone

3D Sprint offers an arsenal of additive manufacturing preparation, editing and management tools, and is delivered with every supported 3D Systems printer. Currently supporting MJF, and micro-SLA models, 3D Sprint is rapidly adding support for all 3D Systems plastic printers, enabling you to 3D print with success and quality using a single software product.

Increase Efficiency with Optimized Management of Your 3D Print Data

We have combined the power of our leading 3D printer technologies with the expertise of our advanced software development teams to bring you state-of-the-art print software. With standard 3D data importers available, you can import 3D meshes and repair them, access a wide range of 3D editing tools, conduct immediate printability analysis, and take advantage of the built-in software intelligence to optimize part placement and supports for your 3D printer. 3D Sprint makes it easy to become efficient with 3D printing and 3D Systems printers.

Driving New Standards in the Industry

3D Sprint delivers on the promise of integrated end-to-end manufacturing solutions that revolutionize the 3D printing and

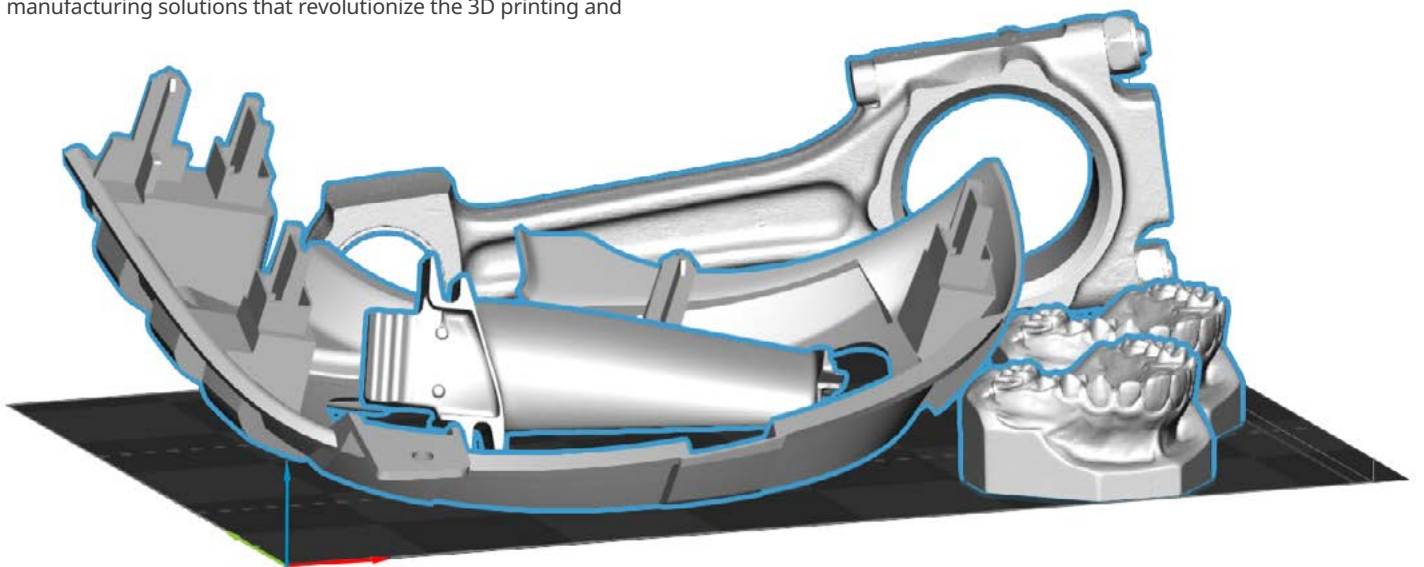
production process. As the leader in the Additive Manufacturing industry, 3D Systems' print software solutions drive and define a new set of standards for manufacturers in ease-of-use, high quality functionality and innovation in 3D printing.

Be More Productive and Reduce Printer Down-Time with Immediate Knowledge and Toolsets

3D Sprint's management and monitoring tools allow you to accurately estimate material usage, print time and optimize material usage. Manage print queues and job priorities, and monitor printers across your local network. Manage material levels both before and during the print operation. Know immediately if a technical issue is causing a problem and manage your 'fleet' to ensure optimal production every step of the way.

Single, Easy User Interface Streamlines Time-to-Print

Simplify your printing process by reducing the need for multiple preparation and design tools: The single user interface delivers the tools you need to rapidly go from design to 3D print, offering an unparalleled user experience across a diverse range of print technologies.



3D Sprint enables you to significantly reduce cost of ownership of your 3D Systems 3D printers by greatly reducing the need for costly software seats by third party vendors

Setting the New Standard in 3D Printing

Connectivity

Redesigned from the ground up, 3D Sprint universal printer communication architecture offers an easily scalable and flexible system to adapt to rapid material and print technology innovation. 3D Sprint's standard offering provides file I/O to support industry-standard 3D file formats. Support for all native CAD and polygonal formats are supported in our Premium version in a single upgrade with no complicated pricing and module structures.

Analyze and Repair

3D Sprint builds on years of software technology and experience offering advanced and automated part geometry analysis, error correction for translation issues in your CAD or STL design files as well as bad polygon geometry in 3D scans. For more difficult geometry repair scenarios, 3D Sprint offers manual polygon editing tools to select, edit and delete polygons, as well as intelligently fill holes and gaps in your polygon data.

Simplicity with Design Automation

With easy-to-use modeling wizards you don't have to be a modeling expert to be productive. 3D Sprint turns decades of application experience in 3D printing and model editing into automated tools that make you more effective. Design automation tools help you accomplish modeling objectives for 3D printing applications, greatly reducing the need for additional software to achieve it.

Oriented for Success

Proper part placement can be key to 3D printing success: 3D Sprint offers a complete set of capabilities such as requirement-driven orientation, dense 3D nesting and manual orientation for fine-tuning your build. Intelligent orientation tools allow you to set your orientation constraints and allow the software to automatically find the ideal solution such as fastest print time, best surface finish, or optimizing support structures. Automatic 3D part nesting efficiently orients and packs your build platform, while high-performance algorithms ensure the tightest possible geometric packing without extended compute times.

An automated Quality Check before sending to your printer will identify any risks associated with your build, leveraging a 10-point part and build volume inspection that ensures you build with success.

Manage and Monitor

Submit print jobs directly from the print workspace, or load 3D Sprint build files created on another system directly to the printer. Accurate build time and material estimation algorithms empower you with the right information to manage your material usage, and make decisions about build priority. Queue management tools deliver total control over job priorities, as well as accurate status updates on remaining build times. Manage your directly-connected printer or have visibility on all networked or shared printers.

Workflow



Key Features of 3D Sprint

- Design automation tools
- Automated and editable support structures
- Support for standard CAD and polygonal I/O native and wide I/O (Premium version and above)
- Printability analysis
- Requirement driven orientation tools
- 3D data editing tools (advanced tools on pro version and above)
 - Automation file repair
 - Manual polygon editing
 - Polygon modeling tools
 - Part labeling
- Color and texture management
- Design automation tools:
 - Splitting, cutting and keying, as well as hollowing and drain hole creation all allow you to accomplish tasks in simple wizards without being a CAD expert.
- Accurate material usage, and build-time estimates
- Shared job queues, build and material management

Printer Support

PRINTERS		SUPPORTED	SPRING '17
MicroSLA	1200	●	●
	2500	●	●
MJP	3500		●
	3600		●
	5500		●
SLA	6000		●
	7000		●
	800		●
	950		●
SLS	500		●
	sPro 140		●
	sPro 230		●
	sPro 60HD		●

Contact Information

AMERICAS

geomagic.sales.americas@3dsystems.com
 Cary, NC, USA : +1.800.691.1839
 Brazil : +55.11.3318.5100
 Mexico : +52.(644).114.6401

EMEA

geomagic.sales.emea@3dsystems.com
 Darmstadt, Germany : +49.6151.357.0

APAC

geomagic.sales.apac@3dsystems.com
 South East Asia : +60.12.398.8473
 Australia & New Zealand : +61.450.593.739
 India : +91.98404.78347

JAPAN

geomagic.sales.japan@3dsystems.com
 Tokyo : +81.3.5798.2510

CHINA

geomagic.sales.china@3dsystems.com
 Hotline : +86.400.890.7899

KOREA

geomagic.sales.korea@3dsystems.com
 Seoul : +82.2.6262.9900



3D Systems provides comprehensive 3D products and services, including 3D printers, print materials, on-demand parts services and digital design tools. Its ecosystem supports advanced applications from the product design shop to the factory floor to the operating room. As the originator of 3D printing and a shaper of future 3D solutions, 3D Systems has spent its 30 year history enabling professionals and companies to optimize their designs, transform their workflows, bring innovative products to market and drive new business models. Specifications subject to change without notice. 3D Systems, Geomagic and the 3D Systems Logo are trademarks of 3D Systems, Inc. All other trademarks are the property of their respective owners.