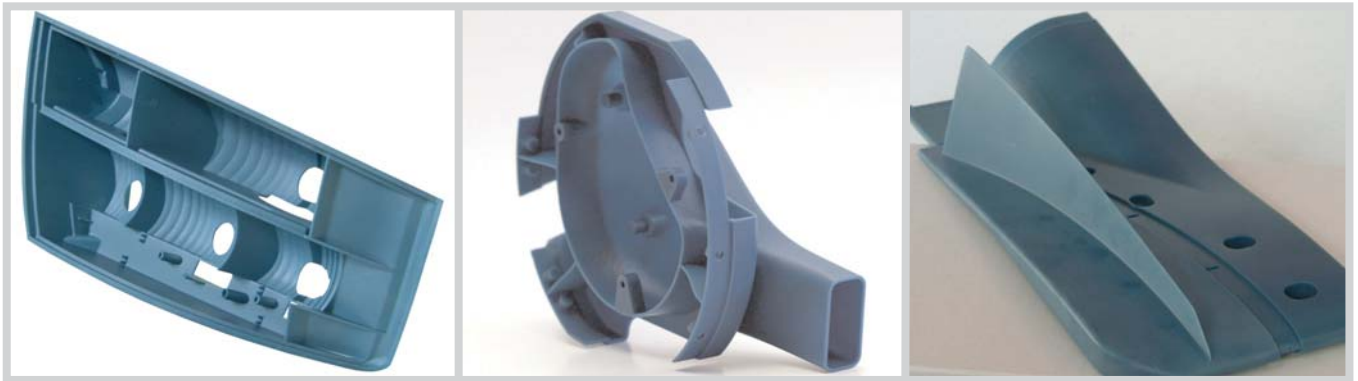




Accura® Bluestone™ plastic

for use with solid-state stereolithography (SLA®) systems

A high stiffness engineered nano-composite that opens new applications for stereolithography users.



Aerodynamic and functional parts produced with Bluestone nano-composite plastic. Images (centre and right) courtesy of Renault F1 Team.

APPLICATIONS

- Wind tunnel testing for the motorsports and aerospace industries
- Production of CMM/inspection and assembly jigs and fixtures
- Lighting design and other applications where heat-generation from electrical components may be a factor
- Covers and enclosures of electrical and mechanical components
- Water-handling products, such as pump and impeller design or other components
- Automotive "under-the-hood" applications
- Housings and enclosures that require high stiffness and rigidity, such as those for business machines
- Electronic applications, such as insulating components, connectors, adaptor fittings, bases, sockets, and areas where ceramics might be used

FEATURES

- Exceptional stiffness
- High temperature resistance
- Excellent accuracy
- High humidity resistance
- Non-settling formulation
- Fully developed and tested build styles

BENEFITS

- Bluestone parts resist deformation even under heavy loads
- Resists temperatures up to 250 °C, making it suitable for tooling or other demanding applications
- Parts retain their properties over time
- No expensive mixing equipment required
- Consistent mechanical properties, even on long builds
- Improves/enhances demanding applications: wind tunnel, soft tooling, injection mould tooling
- Maximise reliability with no user R&D

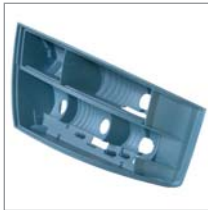
Accura® Bluestone™ nano-composite plastic

For use with solid-state stereolithography (SLA®) systems

"Bluestone resin is an excellent fit for applications requiring added stiffness and thermal resistance. This material is perfect for applications in aerodynamics, lighting applications (such as reflectors), and masters for vacuum casting and thermoforming. As a service provider, we need to have flexibility in our material offerings, and Bluestone resin allows us to fulfil many customers' needs for a variety of applications. Now we can offer our customers a unique material with improved part quality and functionality".

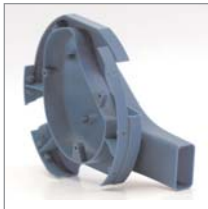
– Rainer Neumann, General Manager, 4D Concepts GmbH

Bluestone™ material is highly suited to prototype electrical enclosures where elevated temperatures might be involved, such as this automotive component.

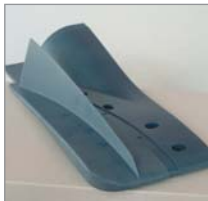


Ideal for functional components that might be used in aggressive environments.

Image courtesy of Renault F1 Team.



Bluestone™ nano-composite material is ideal for wind tunnel testing - where stiff components are required.



TECHNICAL DATA

Liquid Material

MEASUREMENT	CONDITION	VALUE:
Appearance		Opaque blue
Liquid Density	@ 25 °C (77 °F)	1.70 g/cm ³
Solid Density	@ 25 °C (77 °F)	1.78 g/cm ³
Viscosity	@ 30 °C (86 °F)	1200 - 1800 cps
Penetration Depth (Dp) *		4.1 mils
Critical Exposure (Ec) *		6.9 mJ/cm ²
Tested Build Styles		EXACT™

Post-cured Material

MEASUREMENT	CONDITION	VALUE:
Tensile Strength	ASTM D 638	66 - 68 MPa (9.6 - 9.8 KSI)
Tensile Modulus	ASTM D 638	7,600 - 11,700 MPa (1,100 - 1,700 KSI)
Elongation at Break (%)	ASTM D 638	1.4 - 2.4 %
Flexural Strength	ASTM D 790	124 - 154 MPa (18 - 22.3 KSI)
Flexural Modulus	ASTM D 790	8,300 - 9,800 MPa (1,200 - 1,417 KSI)
Impact Strength (Notched Izod)	ASTM D 256	13 - 17 J/m (0.24 - 0.32 ft-lbs/in)
Heat Deflection Temperature	ASTM D 648	
	@ 0.45 MPa (66 PSI)	65 - 66 °C (149 - 151 °F)
	@ 1.8 MPa (264 PSI)	65 °C (149 °F)
	@ 0.45 MPa (66 PSI) with 120°C Thermal Postcure	267 - 284 °C (513 - 543 °F)
Hardness, Shore D		92
Co-efficient of Thermal Expansion	ASTM E 831-93	
	TMA (T<Tg, 0 - 20°C)	33 - 44 (x 10 ⁻⁶ m/m °C)
	TMA (T>Tg, 90 - 150°C)	81 - 98 (x 10 ⁻⁶ m/m °C)
Glass Transition (Tg)	DMA, E''	71 - 83 °C (160 - 181 °F)

* Dp/Ec values are the same on all systems.



3D Systems Europe Ltd.

Mark House, Mark Road
Hemel Hempstead
Herts HP2 7UA - UK
www.3dsystems.com

Tel: (+44) 1442 282 600
Fax: (+44) 1442 282 601
marketing.uk@3dsystems.com
Nasdaq: TDSC

3D Systems GmbH

Postfach 12 02 07
D-64239 Darmstadt
Germany

Tel: (+49) 6151 357 0
Fax: (+49) 6151 357 333
info@3dsystems-europe.com

Warranty/Disclaimer: The performance characteristics of these products may vary according to product application, operating conditions, material combined with, or with end use. 3D Systems makes no warranties of any type, express or implied, including, but not limited to, the warranties of merchantability or fitness for a particular use.

© 2007 by 3D Systems, Inc. All rights reserved. Specifications subject to change without notice. Bluestone and EXACT are trademarks, and the 3D logo, Accura and SLA are registered trademarks of 3D Systems, Inc.