



# On Demand Manufacturing

Quickparts®



# On-Demand Parts Manufacturing Services

---

Using our additive and traditional manufacturing technologies, bring your design to life and create real functional end-use parts. With instant online quoting from anywhere in the world and a global team of 3D printing experts, we are committed to customer success.

Our commitment is to deliver **QUALITY, INNOVATION and RELIABILITY.**



Wheel and axle prototype printed with ColorJet Printing (CJP)

---

## INSTANT ONLINE QUOTES

- Simply upload your 3D CAD file(s) and receive instant lead times and custom-quotes based on your project specifications

## SUPERIOR PART QUALITY

- The latest solutions and technologies in additive and traditional manufacturing

## ISO 9001:2008 CERTIFIED

- Certified to meet ISO's quality management system standards
- High-quality, precision-produced parts delivered rapidly
- ITAR and AS9100C

## HIGH RESOLUTION AND ACCURACY, FROM MICRO-PARTS TO XL PARTS

- Accurate prototype parts
- The finest feature details
- Thinnest wall thickness
- Large, high-definition single piece parts

## WE CAN HELP MEET YOUR NEEDS

- Dedicated project managers
- Reduced development costs
- Each order reviewed for manufacturability

# Additive Manufacturing

Additive manufacturing includes processes that produce parts for concept models, rapid prototypes, functional testing and form-and-fit testing models. Choose from a wide range of materials for rapid prototypes, tooling and patterns.



## STEREOLITHOGRAPHY (SLA)

AS FAST AS NEXT-DAY SHIPPING

SLA produces photopolymer resin parts with a smooth surface finish, with a wide variety of material and post-processing options. Ideal for concept models, rapid prototypes, master patterns, snap fit assemblies, form-and-fit testing and tradeshow models.



## SELECTIVE LASER SINTERING (SLS)

AS FAST AS NEXT-DAY SHIPPING

SLS produces nylon parts with great durability with highly complex geometries, snap fits and living hinges. Ideal for functional testing, rapid prototyping, low-volume manufacturing parts, and high-heat and chemically resistant applications.



## DIRECT METAL PRINTING (DMP)

1-3 WEEKS

DMP produces complex stainless steel and titanium metal parts that need to be manufactured quickly, accurately and with no costly and time consuming tooling. The fully dense printed parts have excellent surface finish and feature detail resolution.



## COLORJET PRINTING (CJP)

AS FAST AS 3 BUSINESS DAYS

CJP produces full-color parts ideal for concept models, architectural models and demonstration models. This technology offers full-color, quick production time and parts that can be clear or wax coated for a smooth finish.



## FUSED DEPOSITION MODELING (FDM)

AS FAST AS 3 BUSINESS DAYS

FDM produces plastic parts for concept models, engineering models, functional testing, consumer products, high-heat applications and initial prototypes. We offer a variety of materials that are high-strength including production-quality ABS.



AC vent printed in Stereolithography (SLA)



Finished SLA Engine Block

# Investment Casting Patterns

Investment casting has been successful in creating near net shapes for thousands of years. We provide direct cast patterns produced with rapid prototyping, allowing more designs to be cast without the initial expense and time to fabricate wax pattern tooling.



## QUICKCAST® PATTERNS

An SLA-build style that creates hollow direct patterns for investment casting. Hexagonal support structures add strength, allow for easy drainage and facilitate collapse of the pattern during thermal expansion.

## PROJET® WAX PATTERNS

ProJet produces high-definition wax patterns used for direct investment casting with a wide range of finishes and resolutions.

## CASTFORM™ PATTERNS

Utilizing 3D Systems CastForm™ PS material, patterns are 3D printed for use in the metal casting process. CastForm patterns are best for automotive and machine components that do not demand a fine surface finish.



Part made with  
Injection Molding



# Traditional Manufacturing

3D Systems Quickparts provides production tooling and part options to help you move from the prototype to the final product. Quickparts allows you to cut weeks off of your product launch, helping you realize substantial cost and time savings.



## CAST URETHANE PARTS

AS FAST AS 6 DAYS FOR FIRST ARTICLES

This technology uses silicone molds to produce molded urethane parts for pre-production runs, marketing samples, test prototypes and low-volume manufacturing. Parts can be cast in color or texture to beautifully enhance the cosmetic look of your parts. Great simulation of injection-molded parts with low tooling cost.



## CNC MACHINED PLASTIC & METAL PARTS

6-8 DAYS

Computer Numeric Control (CNC) machining produces high-quality metal and plastic parts requiring the greatest degree of dimensional accuracy, critical surface finishes, material-specific properties, and large or oversized parts. Parts can be machined in a wide variety of materials directly from 3D CAD data.



## LOW-VOLUME INJECTION MOLD TOOLING & PARTS

2-4 WEEKS

The process of injecting plastic into an aluminum or steel mold, injection molding is fantastic for low- and high-volume part manufacturing in industries like automotive, construction and consumer products. 3D Systems provides both molding and tooling services to meet your needs.



## SHEET METAL PARTS

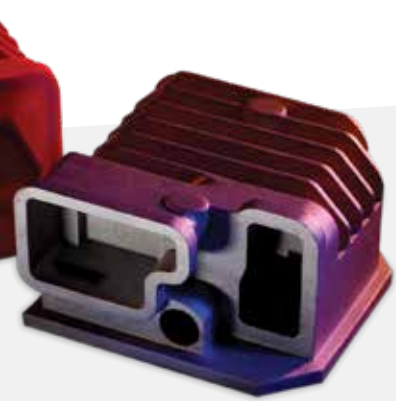
5-10 DAYS

Produced using laser cutting, water jetting or chemical etching to form blanks from sheet metal stock. Blanks are then bent to shape using press brakes or quick custom tooling to form the final geometry (gussets, contouring, embossing, etc).



## METAL DIE CASTING

Metal Die Casting is the process of forcing molten metals under high pressure into machined mold cavities to produce large quantities of small to medium sized parts with good detail and fine surface quality.



Metal part made with  
CNC Machining



Selective Laser Sintering  
part printed in DuraForm

## Bring Your Design to Life

Visit [www.3dsystems.com/quote](http://www.3dsystems.com/quote) and get an instant quote.

### NORTH AMERICA

[quickparts.quote@3dsystems.com](mailto:quickparts.quote@3dsystems.com)

Atlanta, GA: +1 770 901 3200

### EUROPE

[quickparts.eu@3dsystems.com](mailto:quickparts.eu@3dsystems.com)

Belgium: +32 16 94 64 00

Benelux: +31 (0)495 49 52 75

France: +33 (0)2 43 51 20 30

Germany: +49 6151 357 456

Italy: +39 0121376966

UK: +44 (0)8450 514900

### LATIN AMERICA

[quickparts.latam@3dsystems.com](mailto:quickparts.latam@3dsystems.com)

Brazil: +55 11 3318 5151

Mexico: +52 55 5273 8912

Uruguay: +598 2707 8656

### ASIA PACIFIC

[quickparts.ap@3dsystems.com](mailto:quickparts.ap@3dsystems.com)

Australia: +61 (0) 3 9819 4422

China: +86 020 31104319

Japan: +61 (0) 3 9819 4422



### 3D Systems Corporation

301 Perimeter Center North, Suite 400

Atlanta, GA 30346

[www.3dsystems.com/quickparts](http://www.3dsystems.com/quickparts)

©2016 by 3D Systems, Inc. All rights reserved.  
Specifications subject to change without notice.  
3D Systems, QuickCast and ProJet are registered  
trademarks and the 3D Systems logo and  
CastForm are trademarks of 3D Systems, Inc.