



# INSTALLATION GUIDE

## Release Note

3DXpert 14



## Table of Contents

Hardware Requirements .....	1
Memory (RAM) / Processor:.....	1
Graphics Card: .....	1
3 Button Mouse .....	1
Software Requirements.....	2
Installation Privileges.....	3
Installation Procedure .....	3
Installation Stages .....	8
Installation Layout .....	9
Installation Scenarios .....	9
Get Node IDs Utility.....	10



## Hardware Requirements

The hardware requirements for installing 3DXpert are as follows:

### Memory (RAM) / Processor:

**Minimum:** 16 GB RAM, 4 cores

**Recommended:** 32 GB RAM, 6 cores i7 (i7-6850K)



**Note:** To gain better I/O performance, it is recommended using a solid state hard Drive (SSD). Windows and 3DXpert should be installed on the SSD. The file management should be configured on a different hard drive, local or network based.

### Graphics Card:

Quadro cards from NVidia and FireGL/FirePro cards from ATI are the most recommended cards for CAD/CAM software.

The performance of graphics cards is tightly related to driver version and memory size. The newer the driver and the greater the memory, the better the graphics card performance.

For recommended graphics cards see the following website:

<https://cimgraphics.cimatron.com>

The graphics card must support OpenGL 3.3:

**Minimum:** 1 Gb of memory

**Recommended:** 2 Gb of memory

### 3 Button Mouse

## Software Requirements

The software requirements for installing 3DXpert are as follows:

The following Windows operating systems are supported:

**Recommended:**

- Windows Server 2008 or 2012.
- Windows 7, Professional/Ultimate Edition.
- Windows 8 or 8.1, Professional/Ultimate Edition.
- Windows 10, Professional/Ultimate Edition.



**Note:** .NET Framework 4.6.2 is an installation prerequisite. If this is not installed, it is automatically installed during the 3DXpert installation process.

**Not supported:**

- All 32-bit operating systems are not supported.
- Windows XP 64-bit is not supported.

Internet Explorer 9 or higher must be installed.

## Installation Privileges

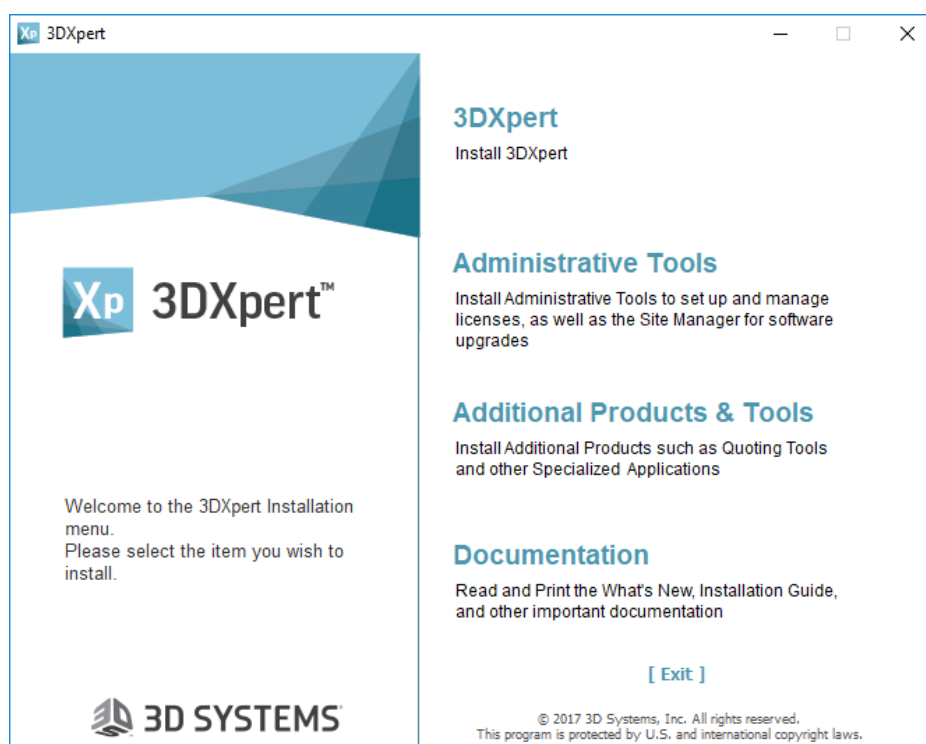
Only users that are logged-in as Administrators can install 3DXpert.

## Installation Procedure

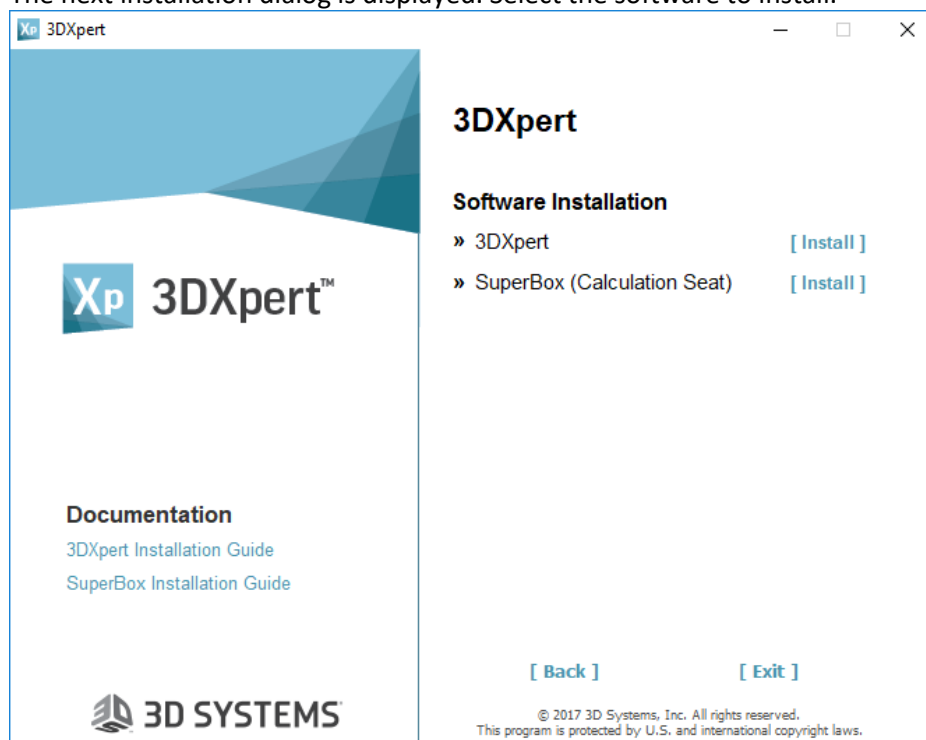
Once the installation is complete, to use 3DXpert you will require a license file which will be sent to you by your local 3D Systems Reseller. See **Get Node IDs Utility** on page 10.

Prepare your computer for installation, as follows:

1. Close all other applications.
2. Install 3DXpert from one of the following Installation Sets.
  - a. A link to a zipped installation set on a 3D Systems website. Unzip the installation set to a folder and run the **setup.exe** file. The installation Welcome dialog is displayed; proceed as detailed on page 5 of this guide.
  - b. A USB drive containing the installation set. Insert the USB drive. The 3DXpert installation menu (Autorun) is displayed; proceed to the next step of this guide.
3. The 3DXpert installation menu (Autorun) is displayed. Click the 3DXpert item.



4. The next installation dialog is displayed. Select the software to install.

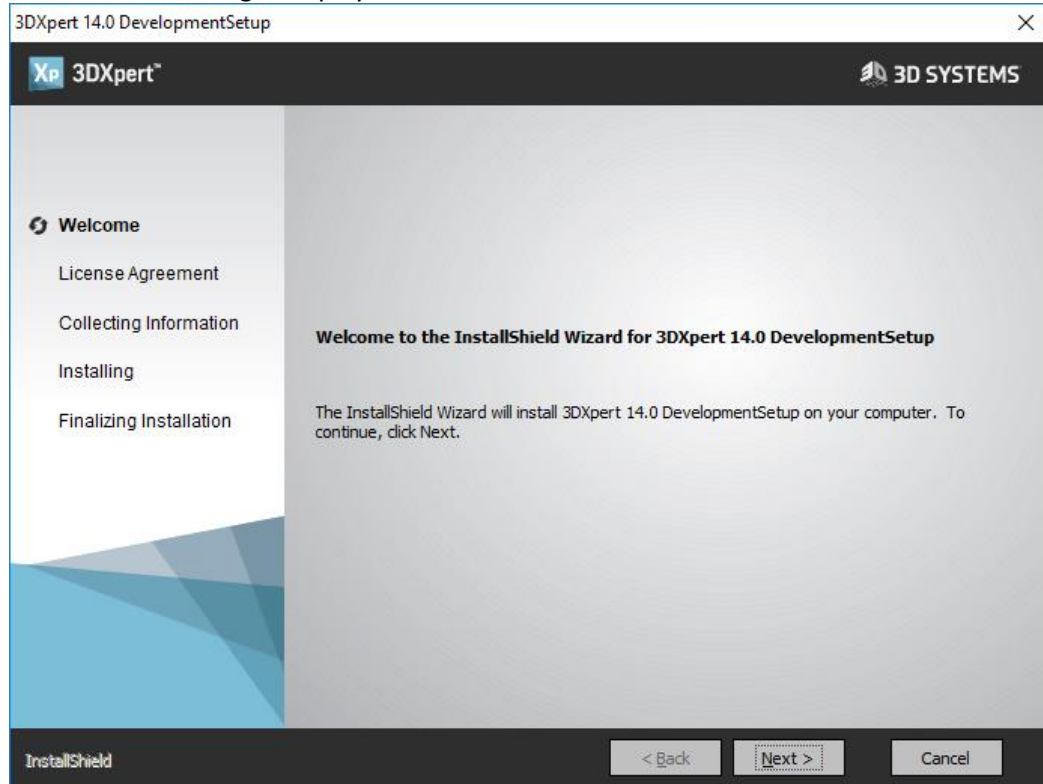


The installation program runs automatically; proceed according to the Installation Wizard instructions.

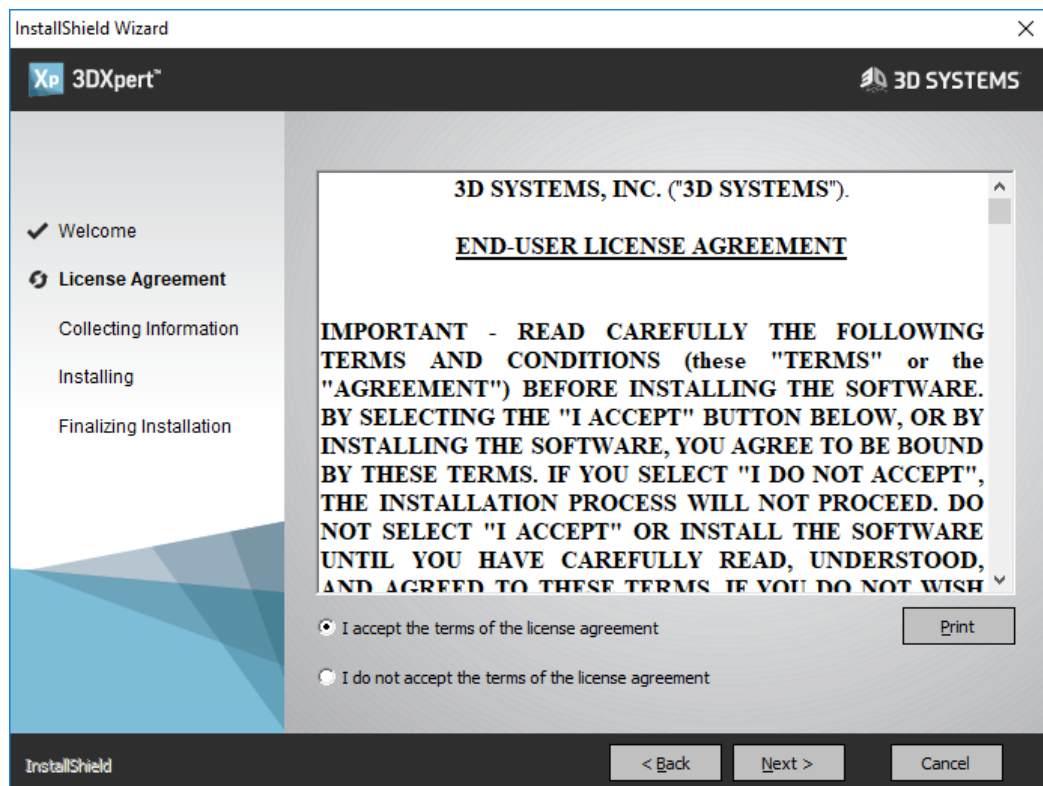


**Note:** Do not use spaces in any of the directory names (xxx yyy) – use underscores instead (xxx\_yyy). 3DXpert does not support names with spaces.

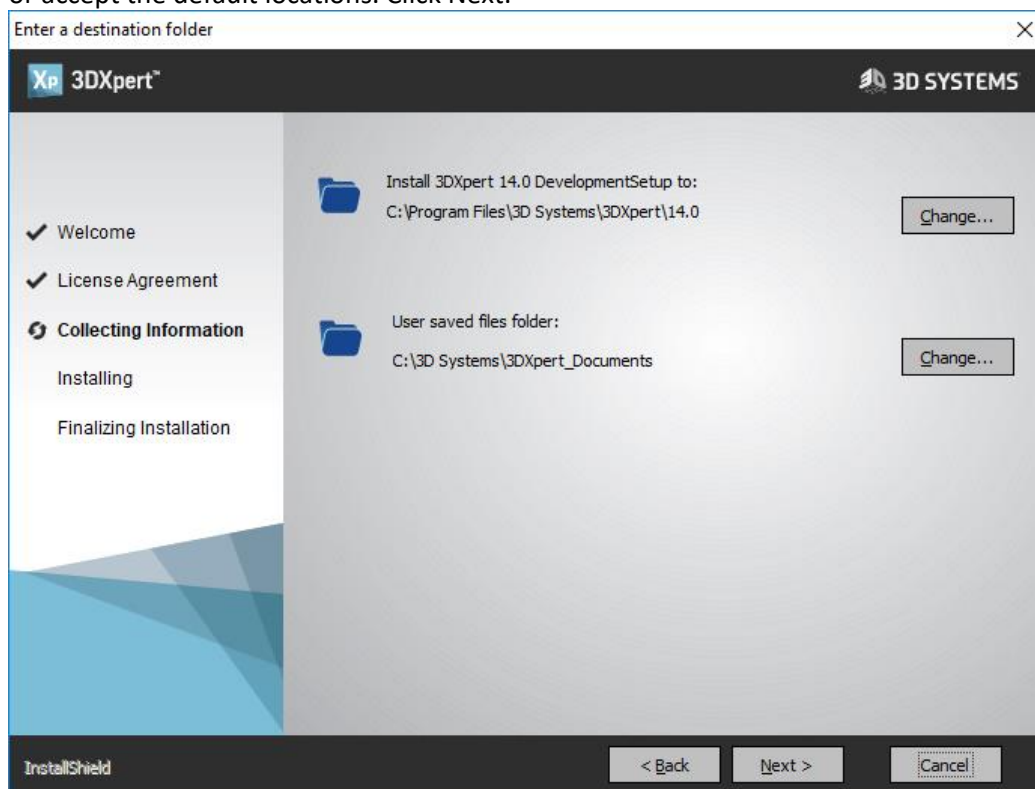
5. The Welcome dialog is displayed. Click Next.



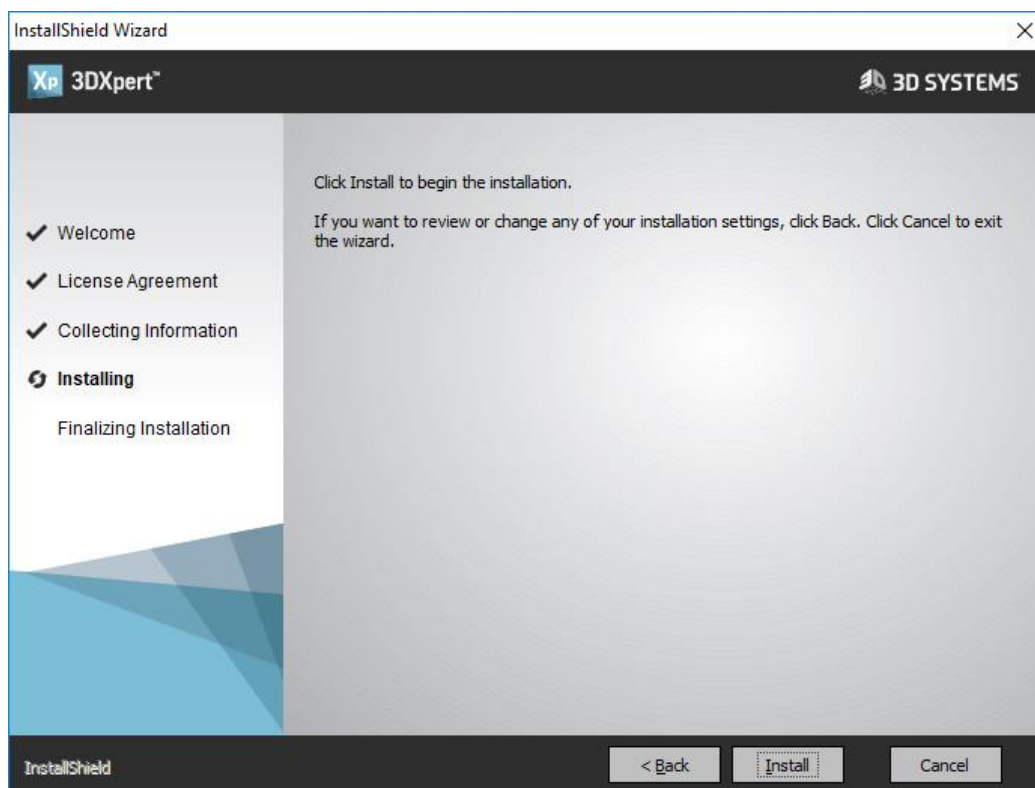
6. The License Agreement dialog is displayed. Read it carefully. To accept the terms of the license agreement, select the appropriate option and click Next.



7. The Destination Folder dialog is displayed. Change the destination folders as required, or accept the default locations. Click Next.



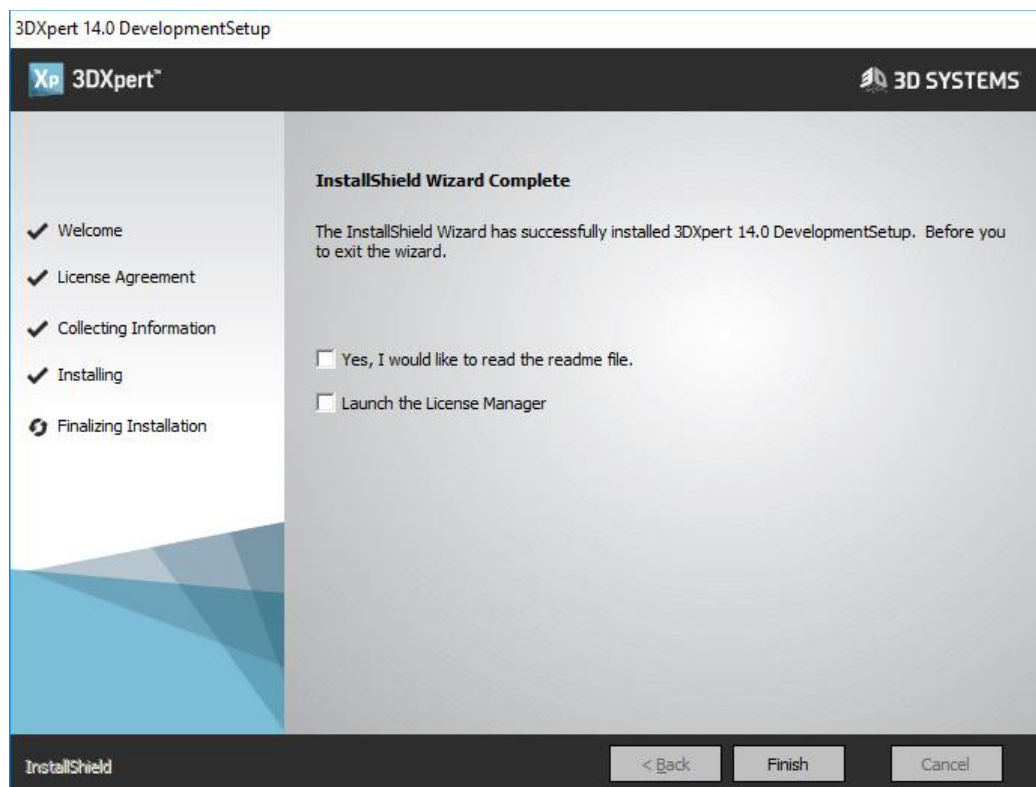
8. The components are about to be installed in the Ready to Install dialog. Click Install.



9. When the installation is complete, we recommend that you read the Readme file. Click Finish to exit the installation procedure.



**Notes:** If you have the license file, enter the Local License Folder at this stage. However, if you have not received the license file yet, it is still possible to continue and finish the installation. Later on, it is possible to set the license information using the License Manager tool, the first time 3DXpert runs or from the 3DXpert Control Panel. (See the License Guide).



## Installation Stages

The installation program installs the following software first, prior to installing 3DXpert; these items are a prerequisite for the continuation of the installation:

- DotNet environment.
- Microsoft Visual C++ Redistributables



**Note:** During this stage of the installation, the system may require a restart.

The 3DXpert installation stages are as follows:

- Checks if the user running the installation has Administrator rights.
- Recognizes the existing 3DXpert versions on the computer (if any) and chooses the proper installation scenario: new, upgrade or additional installation (for a new major version):
  - Upgrades (overwrites) the previous installation, which is the default and recommended mode (for the same major version).
  - Side-by-side (additional) installation to the existing version (for a new major version).
- Creates 3DXpert software layout (folders and sub-folders) and copies files to it.
- Data Files –
  - Preserves relevant user-defined (newly created) and user-modified data files from previous installations.
  - Merges the preference file (CimatronE.prf), attribute template files (modeler.exl and other), and attributes translation file (AttrTrnMap.xml).  
This only occurs for an Upgrade or an Additional installation.
- Installs the Print to PDF driver.
- Set License Location using the license manager (Optional).
- Adjusts 3DXpert software to different computer environments; for example, different operating system languages: German, Japanese, etc.
- Uninstalls 3DXpert software: removes all installed files from the disk, cleans registry, and removes program group.

## Installation Layout

The 3DXpert 14 folder structure is as follows:

```
...\3D Systems\3DXpert_Documents\  
...\Program Files\3D Systems\3DXpert\14.0\  
    \Program\  
    \SourceData\
```

The Data folder is located as follows:

```
...\ProgramData\3D Systems\3DXpert\14.0\Data\
```

The product's name and path (...\**Program Files\3D Systems\3DXpert\**) are set by default and can be changed. However, the location of the following sub-folders *cannot* be changed: Data, Program, SourceData and Workarea.

During the installation, you can change the location of the **3DXpert\_Documents** folder. This is the default folder for user files.

## Installation Scenarios

Several possible installation scenarios are supported, as follows:

1. **New Installation:** Install the latest 3DXpert version on a clean PC.
2. **Upgrade Installation:** When installing the same major version over an existing installation, the system automatically updates the version.

## Get Node IDs Utility

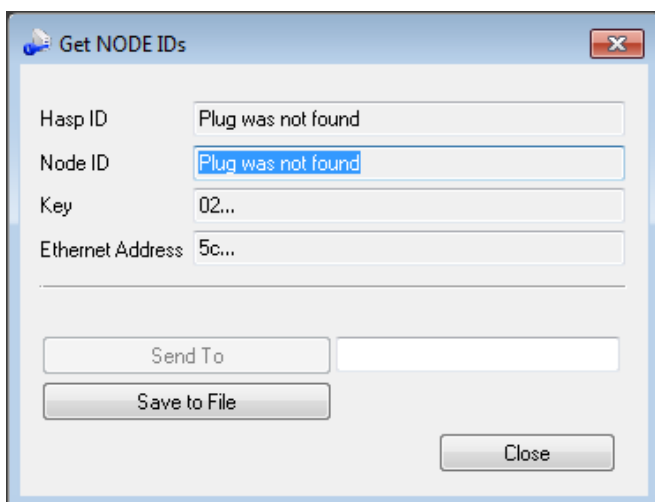
To use 3DXpert you will require a license file which will be sent to you by your local 3D Systems Reseller.

To receive the license file, you first have to run the **Get Node IDs** utility. This utility creates a text file that should be sent to your 3D Systems Distributor. In return, you will receive your license file.

The **Get Node IDs** utility is a standalone utility and can be run without 3DXpert being installed (the utility is supplied on the installation DVD).

When you receive your license file, use the License Manager to "link" the license to your version of 3DXpert. The License Manager can either be accessed during the 3DXpert installation process or (after the installation) by launching the License Manager directly.

The **Get Node IDs** dialog is displayed with the relevant data:




**Note:** In order to create the text file, you must have a plug or a physical LAN Ethernet address.