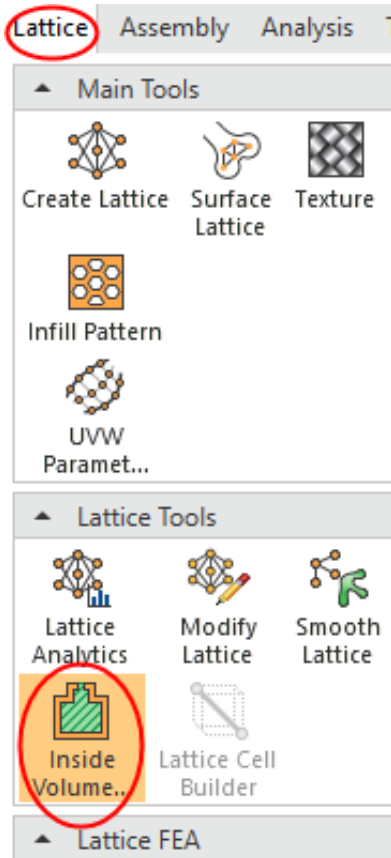




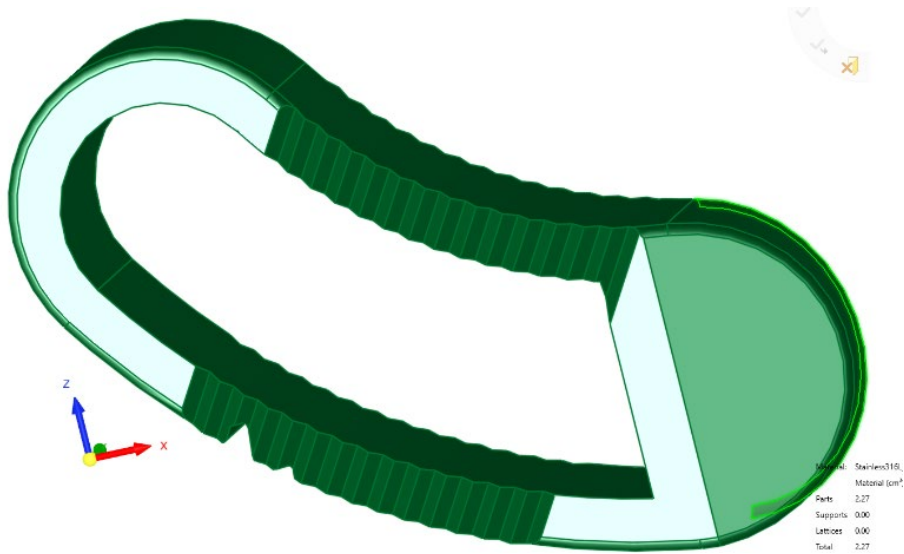
# INSIDE VOLUME FOR LATTICE

Tutorial\_V2 - Updated: 16,0000,1830,371(Official)

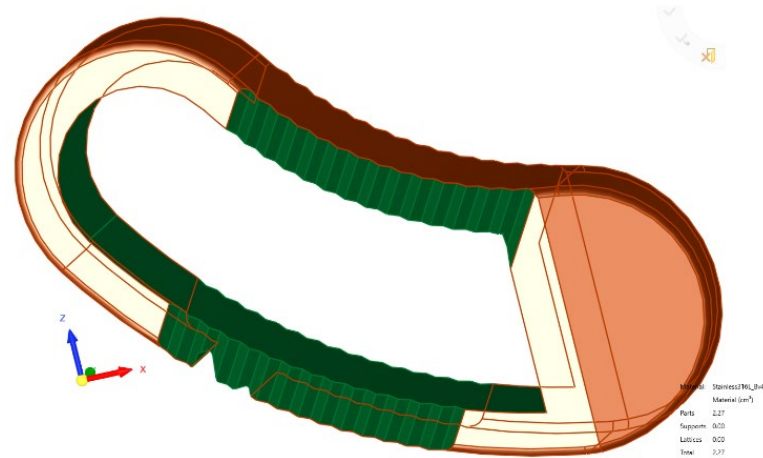
1. Load the file **Cage-Start.elt**.
2. From the toolbar select **Lattice >> Inside Volume for Lattice**.



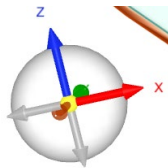
3. Pick the object shown here:



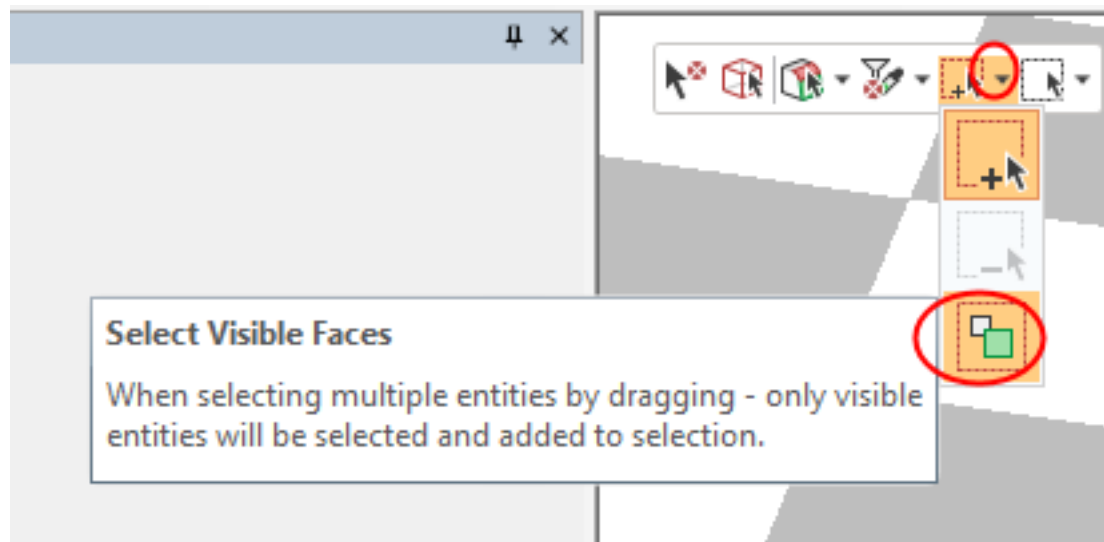
- The next step is to pick the Stop Faces. You can pick one, as the selection will propagate and the rest of the faces will be selected; do not press Exit yet.



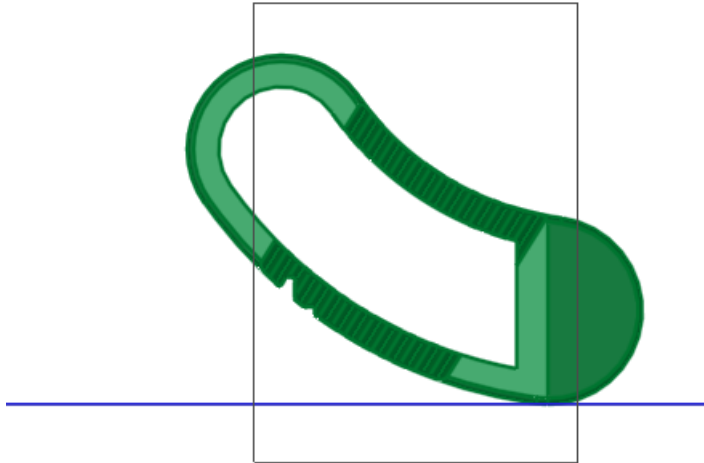
- Use ZPR to look at the object from XZ the direction



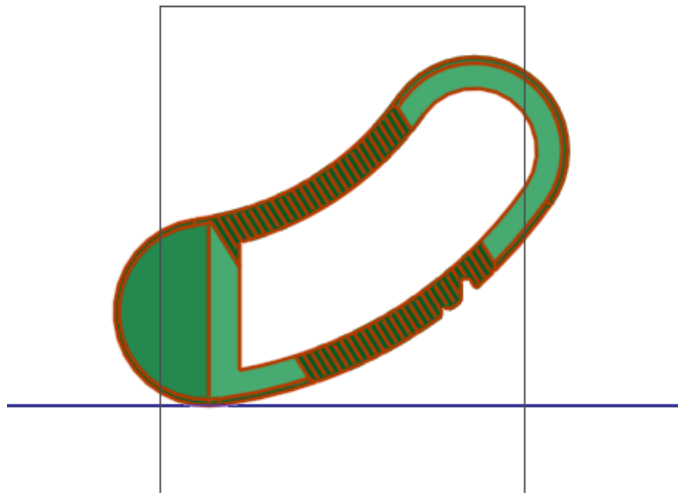
Set the Selection Filter to select only visible faces:

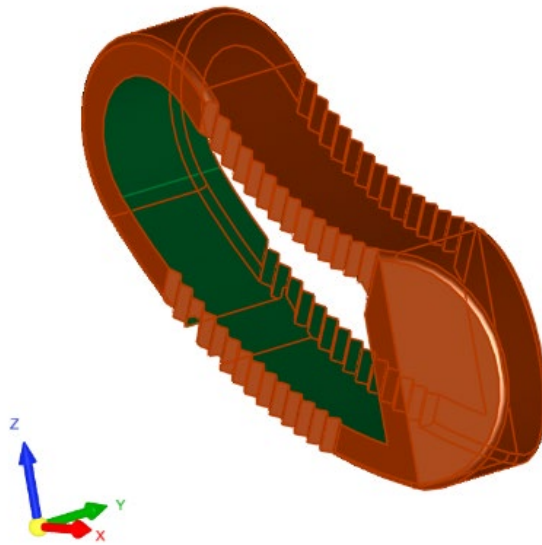


6. Select, by box, the faces shown below.  
If any face is not picked, pick it manually.

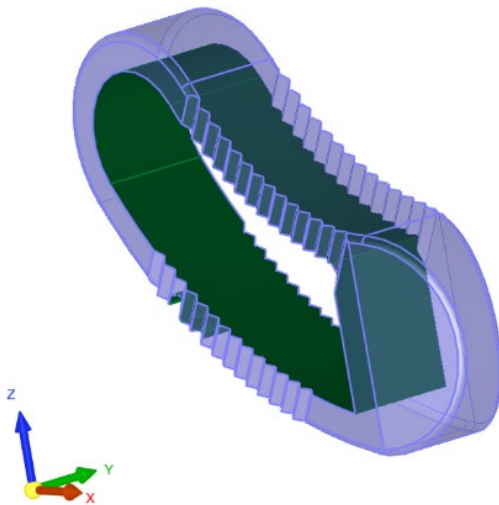


7. Rotate the part by 180 degrees and pick again from the other side:

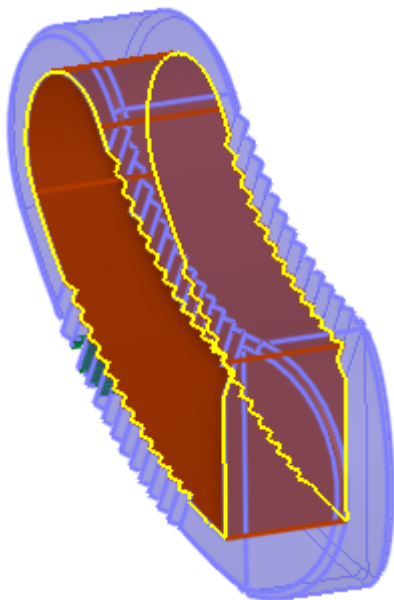
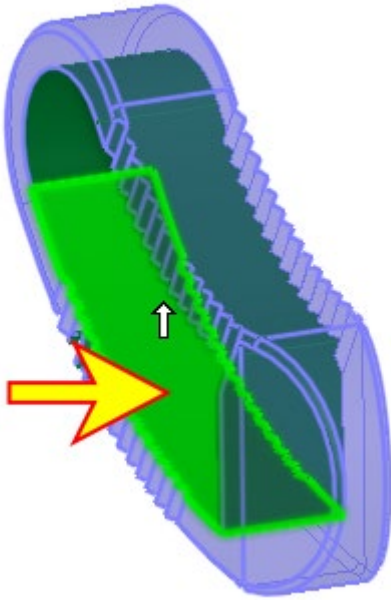




8. Press the middle mouse button to exit the selection.



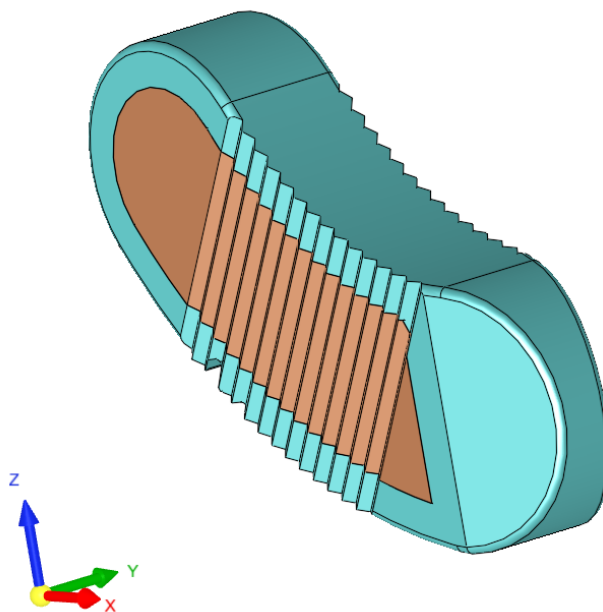
9. Next, pick Internal faces. Pick any of faces, and the selection will propagate to the rest.



10. Press OK



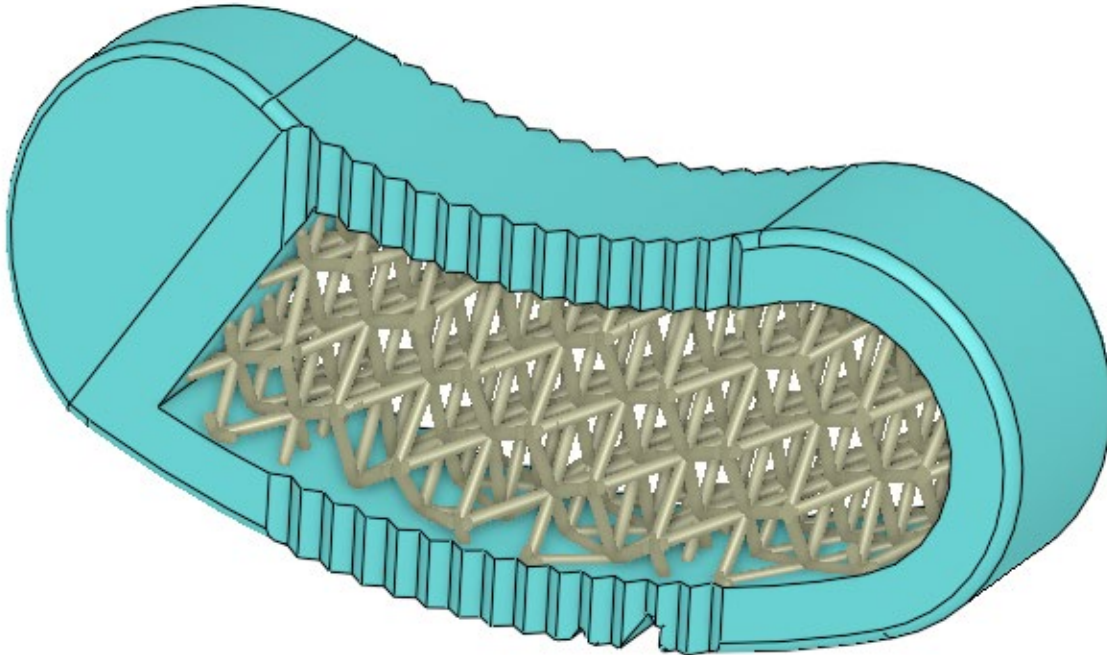
Result – the inner volume of the part is now filled with a solid object.



The result



11. Now you can enter Volume Lattice and create a lattice on this internal volume



End of Exercise