

 **3D Sprint™**

What's New 2026.1

Release Date: 02/25/2026

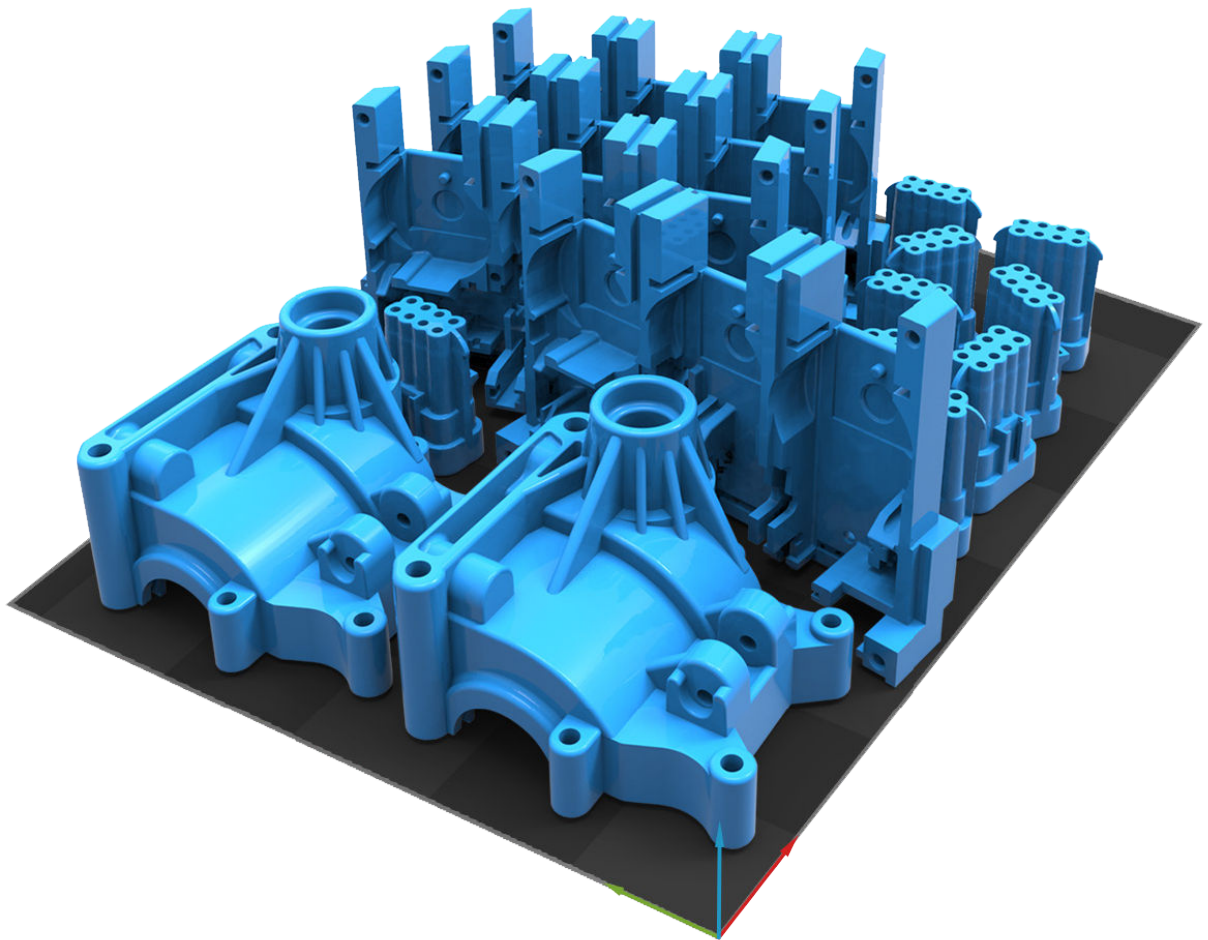
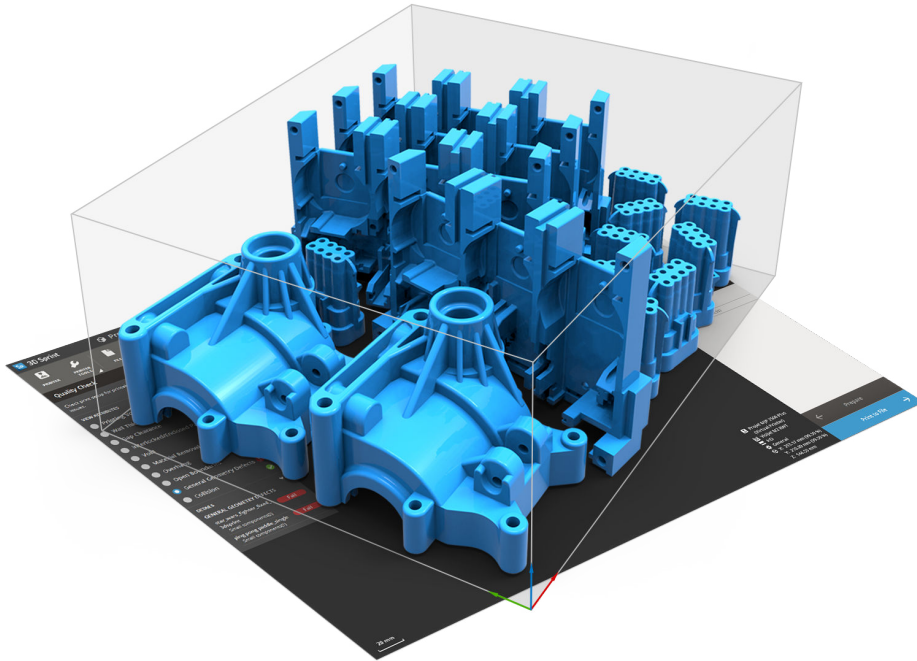


TABLE OF CONTENTS

1	INTRODUCTION	1
2	INSTALLATION	2
2.1	System Requirements	2
2.2	Download and Install Software	2
2.3	Activate License	2
3	NEW PRINTERS FEATURES AND IMPROVEMENTS	3
3.1	Common	3
	Miscellaneous Improvements (All Printers)	3
	Bug Fixes	4
3.2	SLA	5
	SLA Build Style Parameters	5
	Bug Fixes	5
3.3	Figure4	6
	Figure4 Build Style Parameters	6
	Bug Fixes	6
3.4	MJP	7
	NextDent 300 – Sustaining Topics	7
	MJP 300W Plus – Sustaining Topics	7
	Bug Fixes	8
3.5	SLS	9
	Misc. Topics	9
	Bug Fixes	9

1 INTRODUCTION

Introducing 3D Sprint Version 2026.1



Setting the New Standard in 3D Printing

Experience true productivity with exclusive additive manufacturing software for 3D Systems plastic printers.

3D Systems® is 3D Systems' exclusive software for preparing and optimizing CAD & polygon data and managing the additive manufacturing process on its plastic 3D printers. Shipping with each supported 3D systems printer, 3D Sprint delivers tools that allow you to 3D print better parts.

3D Sprint enables you to:

Increase Productivity for 3D Systems Plastic Printer

Prepare and optimize CAD data and then manage the additive manufacturing process on your 3D Systems' plastic 3D printers.

Go from CAD to Print

3D Systems delivers all the tools you need to go from design to 3D Sprint, offering an unparalleled user experience across 3D Systems plastic printers.

Print Better Parts

Eliminate geometry processing artifacts with smarter geometry processing and powerful slicing technology.

Streamline Time to Finished Parts

Save on material and post-processing time without compromising on part quality.

Increase Productivity with Optimized Data Management

Estimate print time and optimize material levels and usage both before and during the print operation.

3D Sprint 2026.1 includes key features and enhancements that bring new value to these objectives with a special focus on capabilities that are required to move from rapid prototyping to serial production.

2 INSTALLATION

2.1 System Requirements

System Requirements

For the latest system requirements information and to learn about specific qualified system configurations, go to the [System Requirements](#) page. Some users have had success running system configurations that deviate from the supported listed on our website. In such cases, these configurations are not officially supported by 3D Systems, Inc.

Additionally, we test a variety of hardware platforms in combination with the graphics subsystems. While we make every attempt to be as thorough as possible, hardware manufacturers change their products frequently and may be shipping newer products or have discontinued active support for others. Check the support section of the website for the latest system requirement information and specific qualified systems.



Note: It is recommended to use the Microsoft Windows 11 Operating System. As of 3D Sprint 4.0 and newer versions, Windows 7 and Windows 8.0 are no longer supported. If you are on Windows 7, please refrain from upgrading to 3D Sprint 4.0 or newer. For those using Windows 8.0, please update to Windows 8.1 to ensure compatibility with 3D Sprint 4.0 or newer.

2.2 Download and Install Software

You can download and install 3D Sprint from the [getting started](#) page.

In addition, automatic software updates are available if you set the Check for updates on launch option to **True** in **Preferences** and a valid activation code is activated, and your computer is connected to the Internet. 3D Sprint will check if a newer version is available and will download it automatically for installation.

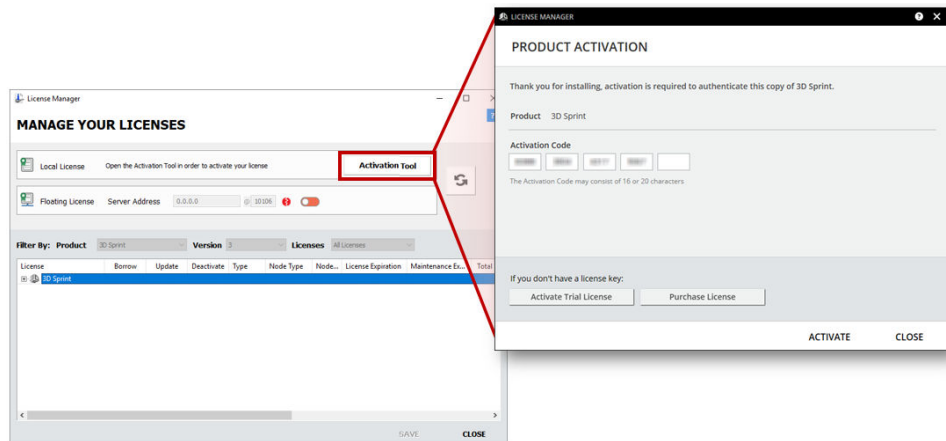
You can also visit support.3dsystems.com, select your printer, then download 3D Sprint for the Software Downloads section on your printer's site.

2.3 Activate License

Activate License

3D Sprint requires license activation to run the application on your PC. You can activate a permanent license by using an activation code.

After you start 3D Sprint, the License Manager window opens. The License Manager allows you to activate and use the 3D Sprint software. For more information, read the [CimLM Licensing Guide](#).



If you have a 3D Systems printer, but do not have the activation code for 3D Sprint, please request it from the 3D Sprint registration page here: <https://support.3dsystems.com/s/get-3d-sprint>*

*This request will go into a system, and we will produce activation codes within 24 hours (excluding weekends).

If you are an existing user and have already activated the license on your PC with the previous version of 3D Sprint, all the existing activation codes will be retained in the new license system, so you can run the newer version of 3D Sprint without re-activating the license.

3 NEW PRINTERS FEATURES AND IMPROVEMENTS

Important Notice

Starting with 3D Sprint 2025, the software versioning scheme is now based on the year and quarter of release. This change improves clarity, ensures consistency, and reflects the ongoing evolution and progress of the software.

Requirement Notice

Please note that printers must be running the required printer firmware version to be able to submit print jobs with 3D Sprint 2026.1. For the latest firmware version, please consult the [3D Sprint - Minimum Firmware Guide](#).

3.1 Common



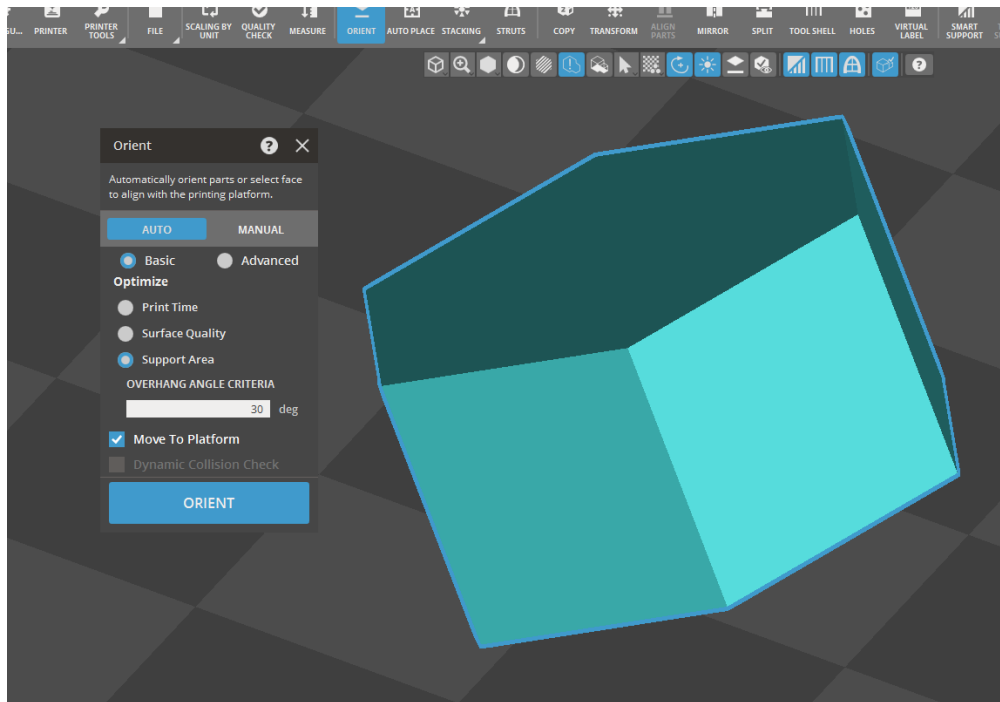
Note: Features labeled with **SUBSCRIPTION** require a 3D Sprint Subscription for access.

With the Basic or Subscription model, you can add specific licensed features labeled with **ADD-ON** as required.

For assistance, please reach out to our technical support team at <http://www.3dsystems.com/support> or contact your regional sales manager.

Miscellaneous Improvements (All Printers)

- CimLM License package updated to version 12.0.
- Best Practices links added for Material SDS.
- Dialog for **configuration options** on first startup after installation.
- Ability to use **Orient** command for changing part location without changing the part's position.



Bug Fixes

The following is a list of issues that have been resolved since the last version of 3D Sprint:

SUMMARY

Preset files not migrating after 3D Sprint version update.

Triangle reduction tool inconsistency issue fixed.

Part color changes in Add Noise command when Keep Color option is toggled on.

Icon color visibility affected under Support Dialog command using dark theme.

Dialog positions requires reset by user to appear.

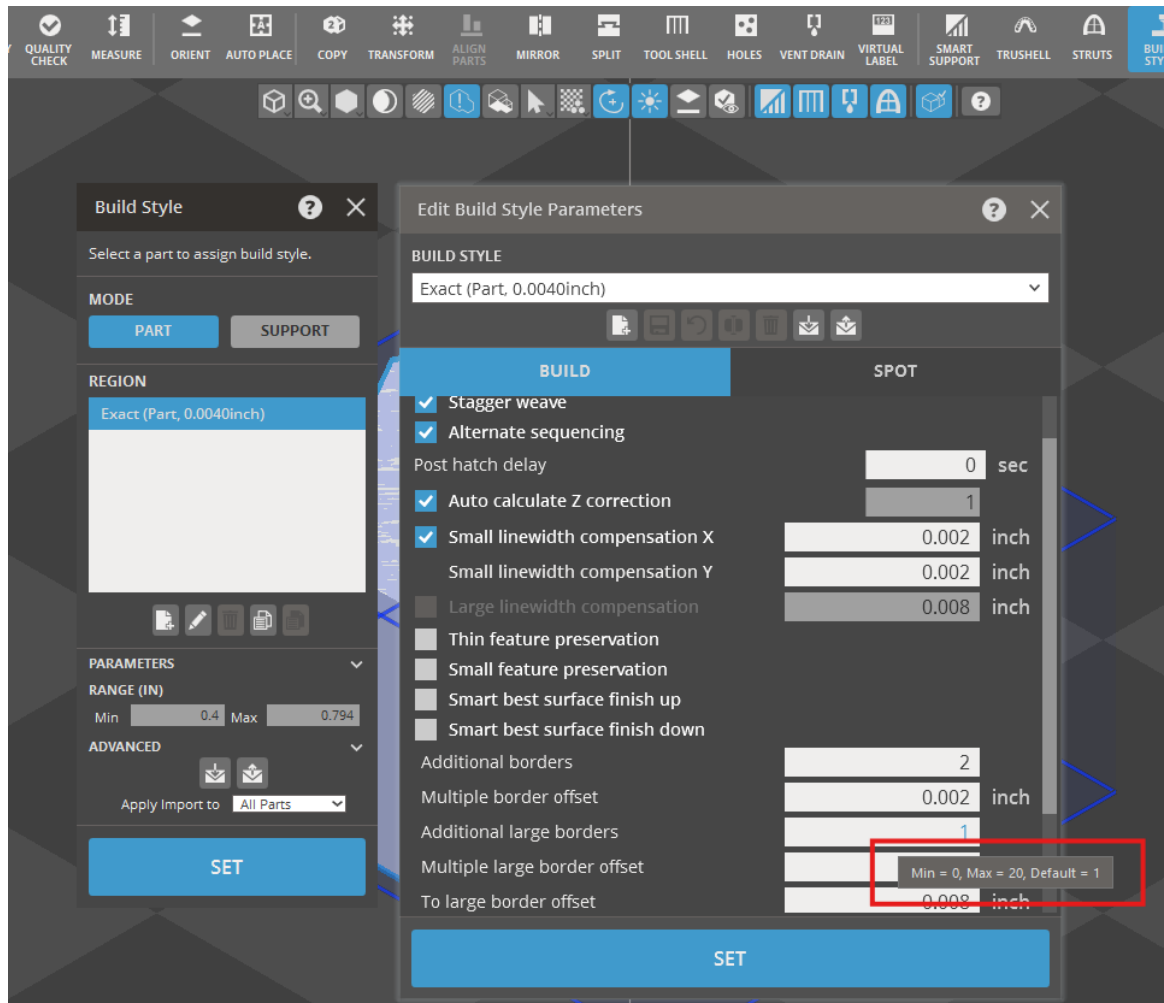
Temporary folders not being removed after Estimate command is used.

Screenshot feature not capturing full 3D Sprint window.

3.2 SLA

SLA Build Style Parameters

- **Minimum and Maximum default values** added for Build Style Parameters.



- Printer Status timeout indicator update from green to yellow.

Bug Fixes

The following is a list of issues that have been resolved since the last version of 3D Sprint:

SUMMARY

PSLA : Scale and Offset Wizard threshold update for larger dimensions.

Fixed Material Cost Estimate showing in Reports.

Temporary style is created after exporting from Recoat Style command.

Anchor point detection not showing in Non-default styles in QuickCast Array.

Unable to see full descriptions of Support Styles.

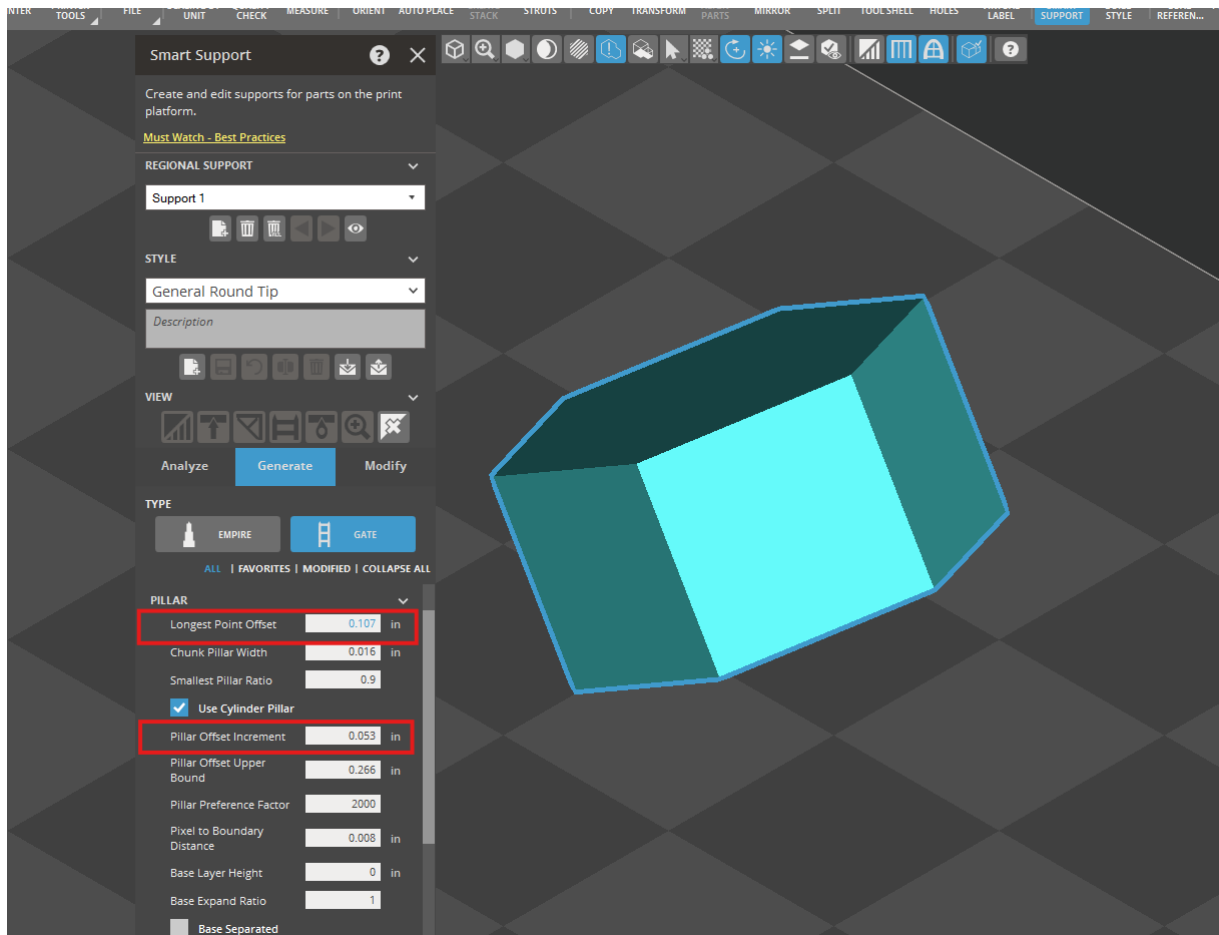
Smart Support tip visibility on outer edge of parts.

PSLA : Default Tool Shell values trigger warning message.

3.3 Figure4

Figure4 Build Style Parameters

- Minimum and maximum values now show for Build Style parameters.
- Expose Parameters - **Longest Point Offset**, **Pillar Offset Upper Bound**, and **Pillar Offset increment** added for Smart Support parameters. **PRO** **SUBSCRIPTION**



Bug Fixes

The following is a list of issues that have been resolved since the last version of 3D Sprint:

SUMMARY

Fig4 135: Fixed printer configuration that changed Z-Scale height value.

Fig 4: When creating Stack, deleted parts show up in the preview.

Smart Support not generating after specific scenario is performed.

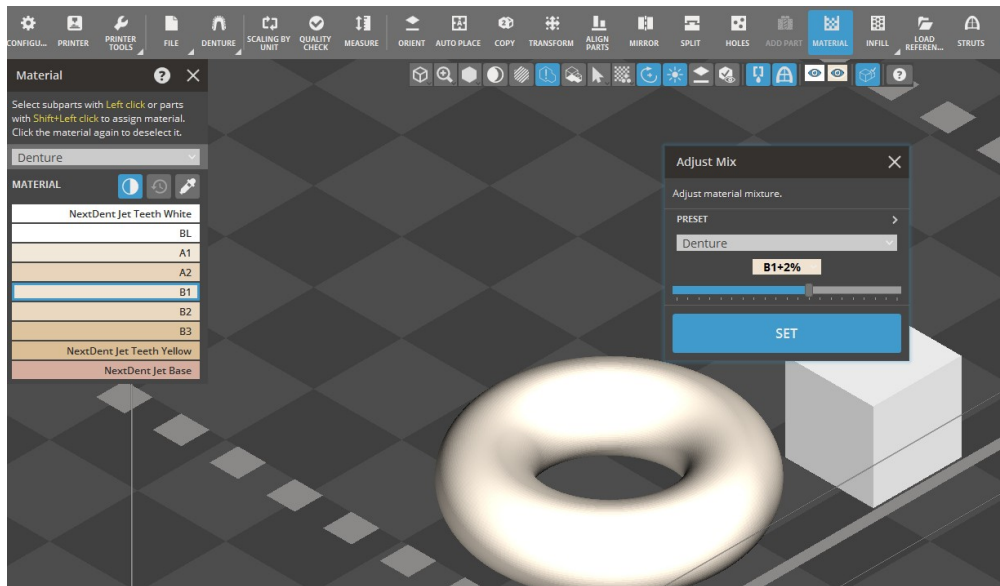
Able to enter Invalid Layer Thickness values in Build Style dialog.

Fig 4 : Parameter update for PostPumpLayerTime Multiplier & PrePumpLayerTimeMultiplier.

3.4 MJP

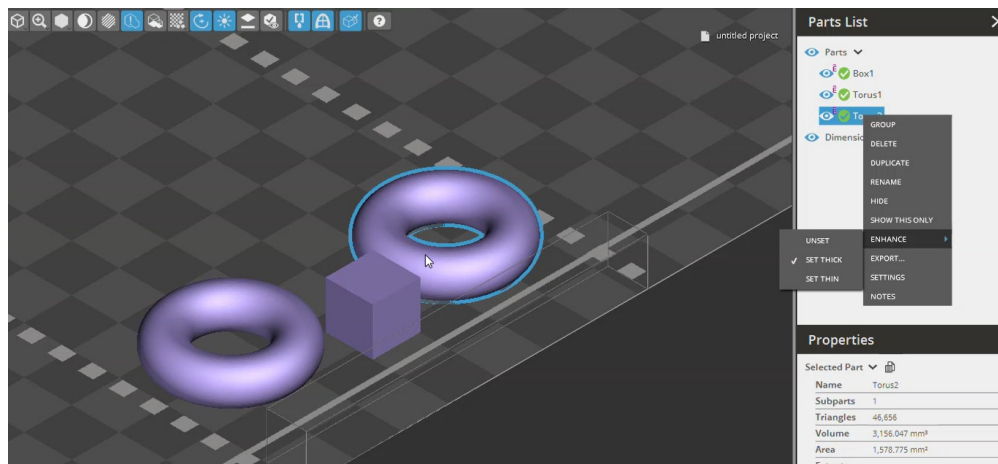
NextDent 300 – Sustaining Topics

- Ability to save presets for Tooth Shades.
- Improvements to material palette customization for ND300.

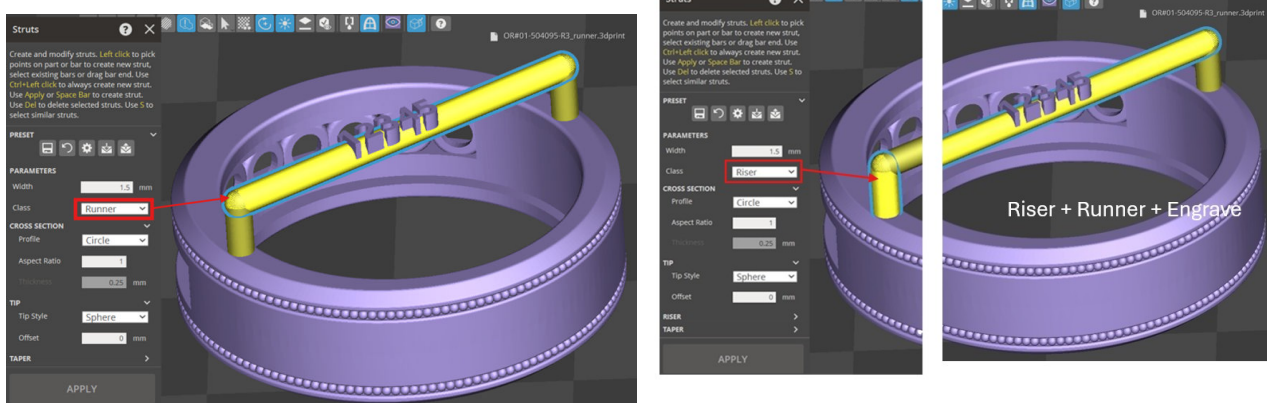


MJP 300W Plus – Sustaining Topics

- Surface Enhance tool includes thick and thin custom part style options.



- Added controls for adjusting Surface Enhancement in X, Y, and Z directions.
- Port all Sprue tools to MJP technology.



Bug Fixes

The following is a list of issues that have been resolved since the last version of 3D Sprint:

SUMMARY

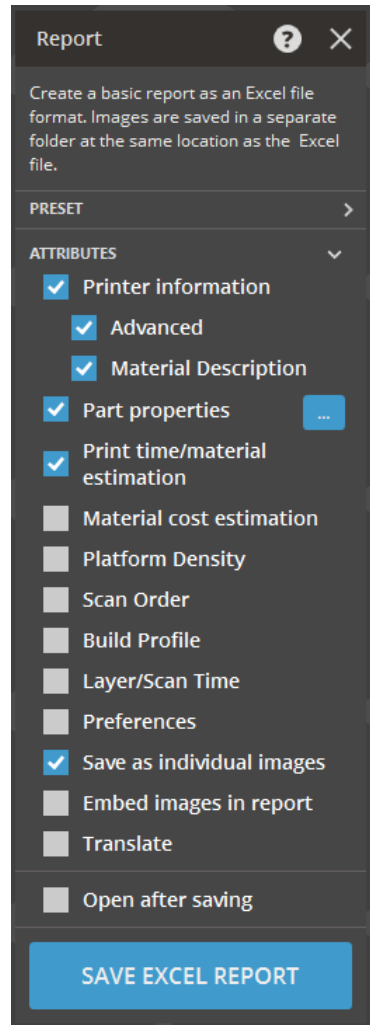
Help page topic missing for import denture feature.

MJP 2500W : Printer unable to receive file from 3D Sprint

3.5 SLS

Misc. Topics

- Additional reports to view Material Description and Advanced options. **PRO SUBSCRIPTION**



Bug Fixes

The following is a list of issues that have been resolved since the last version of 3D Sprint:

SUMMARY

3D Sprint V5.1 parts with incorrect offset in job file build.

Layer time dialog not appearing after specific workflow.

3D Sprint Slice View causing build abort with Sinter.



3D Systems, Inc. 333 Three D Systems Circle Rock Hill, SC 29730
www.3dsystems.com

Register Statement

© 2026 by 3D Systems, Inc. All rights reserved. Specifications subject to change without notice. 3D Systems and the 3D Systems logo are registered trademarks of 3D Systems, Inc.

**Copyright © 3D Systems, Inc. All rights reserved. p/n SW-000xx
Rev. A**