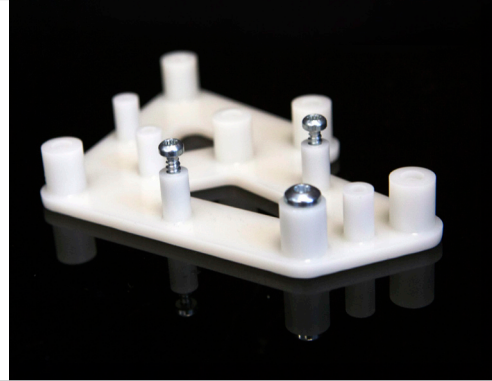
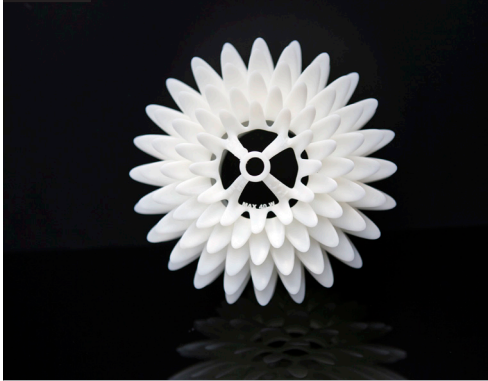


Accura® Xtreme™ White 200

Ultra tough white plastic to replace CNC machined polypropylene and ABS articles



Technical Data

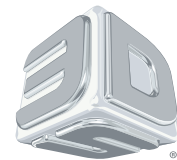
Post-Cured Material			
Measurement	Condition	Metric	U.S.
Tensile Strength (MPa/PSI)	ASTM D 638	45-50	6530-7250
Tensile Modulus (MPa/KSI)	ASTM D 638	2300-2630	334-381
Elongation at Break (%)	ASTM D 638	7-20	7-20
Flexural Strength (MPa/PSI)	ASTM D 790	75-79	10880-11460
Flexural Modulus (MPa/KSI)	ASTM D 790	2350-2550	341-370
Impact Strength (J/m /Ft-lbs/in)	ASTM D 256	55-66	1.03-1.24
Heat Deflection Temperature (°C/°F)	ASTM D 648 @ 66 PSI	47	117
	@ 264 PSI	42	108
Coefficient of Thermal Expansion (μ mm/m °C / μ in/in °F)	ASTM E 831-93 30-50 °C	95	53
	70-140 °C	180	100
Water Absorption (%)	ASTM D 570-98	0.38	0.38
Glass Transition - Tg (°C/°F)	DMA, E"	52	126
Shore D		78-80	78-80

Liquid Material

Measurement	Condition	Value
Viscosity	@ 30 °C (86 °F)	650-750 cps
Penetration Depth (Dp)		4.6 mils
Critical Exposure (Ec)		8.3 mJ/cm ²
Color		White
Solid Density	@ 25 °C (77 °F)	1.18 g/cm ³
Liquid Density	@ 25 °C (77 °F)	1.12 g/cm ³

Features

- Exceptionally tough and durable
- Resists breakage and handles challenging functional assemblies
- Great for snap fits, assemblies and demanding applications
- Ideal for master patterns for vacuum casting



3DSYSTEMS®

3D Systems Corporation Tel: +1 803.326.3900
 333 Three D Systems Circle NYSE: DDD
 Rock Hill, SC 29730, USA www.3dsystems.com

MANUFACTURING THE FUTURE

Warranty/Disclaimer: The performance characteristics of these products may vary according to product application, operating conditions, or with end use. 3D Systems makes no warranties of any type, express or implied, including, but not limited to, the warranties of merchantability or fitness for a particular use.

© 2015 by 3D Systems, Inc. All rights reserved. Specifications subject to change without notice. Xtreme is a trademark and the 3D logo and Accura are registered trademarks of 3D Systems, Inc.